

# THE RESOURCE CONNECTION

Issue # 2: April, May, June, 2010

Your Regional Child Care Resource & Referral Newsletter



210 E Jackson St  
WI Rapids, WI 54494  
715-423-4114  
1-800-628-8534  
Fax: 715-423-2444

crrcw@tzn.net  
www.crrcw.org

Staff:

**Kelly Borchardt**

-Executive Director-

**Linda Francis**

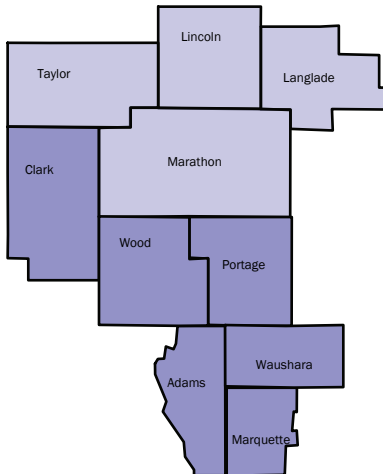
-Resource & Referral Manager-

**Carrie Steinke**

-Referral & Quality Improvement  
Specialist/Certifier-

**Peggy McMahan**

-Technical & Quality Consultant  
(Independent Contractor)-



407 W Main St  
Merrill, WI 54452  
715-539-9779  
1-800-628-8534  
Fax: 715-539-9771

childcareconnection@g2a.net  
www.childcareconnectioninc.org

Staff:

**Micki Krueger**

-Executive Director-

**Rachele Cherek**

-Resource & Referral Specialist-

**Kao L. Xiong**

-Bi-Lingual Aide-

YoungStar is the Department of Children and Families (DCF) proposed new five-star quality rating and improvement system for child care in Wisconsin. Children who participate in quality early childhood programs get a strong start in education and development, the spring-board to future success.



Start early. Start smart. Start here.

YoungStar will improve child care throughout the state, make it easier for parents to choose the best child care for their kids, and link child care provider quality to payments from the Wisconsin Shares program.

YoungStar sets a five-star rating system for child care providers based on education, learning environment, business practices and the health and well being of children. Through this rating system the state will address several key issues in Wisconsin's child care system. It will:

- Improve the overall quality of child care
- Create a clear, understandable tool for parents to choose quality child care
- Create incentives for providers to improve services, particularly for low-income children
- Establish a connection between child care quality and the rate of Wisconsin Shares payments
- Help prevent fraud in the Wisconsin Shares system

There are four key components of YoungStar: (a) training and technical assistance; (b) child care rating; (c) tiered Wisconsin Shares reimbursement based on rating; and (d) communication to parents regarding the rating system.

YoungStar is voluntary for all child care providers, but required for providers participating in the Wisconsin Shares Program. Licensed group centers, licensed family providers, and certified providers will all be eligible to participate in the Wisconsin QRIS.

## YoungStar Proposed Implementation Timeline

- January 2010: DCF to submit QRIS proposal to JFC
- February – March 2010: JFC review of DCF QRIS proposal and take action
- March – April 2010: RFP for QRIS is issued
- August 2010: Rating and training/technical assistance begins
- October 2010: Initial ratings become available to parents on DCF website
- July 2011: WI Shares payments linked to quality

For more information visit: <http://dcf.wisconsin.gov/youngstar>



# BULLETIN BOARD

We acknowledge that the new caregiver background check laws for certified and licensed child care programs have significantly increased expenses for some programs! Keep in mind that expenses directly related to your business are tax deductible. Consult with your accountant for details. Another way to help alleviate the strain of higher expenses might be to implement an annual registration fee. If parents realize the increased fees are covering the costs of criminal background checks on their caregiver and his/her family members, they may be more accepting of additional fees.

***The new laws protect the safety of their children!***

For more information about the Caregiver Background Checks, visit:

[http://dcf.wisconsin.gov/memos/BRL/2010/2010\\_02.pdf](http://dcf.wisconsin.gov/memos/BRL/2010/2010_02.pdf)

You should have received your (BIF)

**Business Information Form in the mail! Return it fast! You could win a prize!**

**The BIF is your annual update. However, we encourage you to update your file as often as needed... by phone, mail, email, or web.**

**week of the young child woyc**



**April 11th—17th.**

**“Early Years Are Learning Years”**

## CONGRATULATIONS!

**Renewal Unlimited, Inc., Wood County Head Start, Inc., and CAP Services, Inc.** for receiving Early Head Start Grants!

**Jenny Szymkowiak, Amherst**

for winning the Terri Lynne Lokoff—

Children’s Tylenol National Child Care Teacher Award!

### Upcoming Children’s Festivals...

Adams Co. Kids Day – April 17

Marshfield Children’s Festival – April 10

Merrill Children’s Festival – April 10

Waushara Co. Blue Ribbon Kids Day – April 10

WI Rapids Children’s Festival – April 17

Clark Co. Family Fall Fest – October 16

Contact your local school district for information about Child Development Days—play-based screenings focused on child development.

## Hands Up For Worthy Wages!

*Worthy Wage Day is May 1, 2010*

Every year on May 1, early childhood educators join together with parents, community groups and other allies to stand up for “worthy wages” for the early childhood education workforce. Because too many committed and qualified individuals leave the field each year, due to low pay and lack of benefits, many early childhood programs are not able to maintain the quality that all children deserve. Worthy Wage Day is our time to remind the country that early childhood educators are everyday heroes for the important work they do.

**Worthy work deserves a worthy wage.**



Your friends at CCR&R of Central Wisconsin and Child Care Connection would like to thank you and let you know how much we appreciate all you do for

children, families, and the community.

**You make a difference!**

**Are you ready to make a commitment to provide high quality child care? Are you interested in using the ECERS, ITERS or FCCERS tools in your program?**

If you’ve answered yes to either of these questions, you might consider being a participant in our Together Quality Grows program through CCR&R! Please visit [www.ccrccw.org](http://www.ccrccw.org) to download a very simple application and to view program criteria. Don’t hesitate . . . **deadline for applications is April 15!**

Current funding allows two family child care programs and two group centers (4 programs total) to be chosen within Adams, Clark, Langlade, Lincoln, Marathon, Marquette, Portage, Taylor, Waushara, and Wood Counties.

Call (715-423-4114/800-628-8534) or visit [www.ccrccw.org](http://www.ccrccw.org)

# PROVIDER TRAINING

## Developing Positive Family Relationships

presented by Kelly Borchardt

*Have you ever heard parents say things like . . . "We never eat broccoli at home, why does my child have to eat it here?" or "Is that all you do is play all day?"*

This workshop highlights the benefits of positive relationships for children, parents and caregivers. Participants will gain an understanding of a parent's perspective and practice good communication techniques thru role playing; small group activities; and discussion.

Monday, April 26, 6:00 – 8:00pm, Little Pioneer Child Care, Westfield

Pre-registration is required. To register contact CCR&R of Central Wisconsin, Inc., at [ccrcw@tznet.com](mailto:ccrcw@tznet.com) or 800.628.8534

*Marshfield Family Resource Center  
& WI Rapids Parent's Place programs*

## Surviving Bullying and Developing Healthy Relationships - 6:00-7:30 PM

Monday April 19th - Marshfield

## Creating Strong Families -

Tuesday, June 15, 6-7:30 PM - Marshfield

Wednesday, June 23, 6-8:00 PM - WI Rapids

## Home Alone - 6:00-8:00 PM

Monday, April 26th - WI Rapids

To register call 715.387.2326 or email [Deborah.decker@cssw.org](mailto:Deborah.decker@cssw.org)

## Shaken Baby Syndrome Prevention & Sudden Infant Death Syndrome Risk Reduction Training

Tuesday, April 13, 2010

SBS 6:00-7:30pm ~ SIDS 7:30-9:00pm

At CCR&RCW Office, 210 E Jackson Street, WI Rapids  
\$15/person for one training OR \$25/person for both

To register, by April 9th, contact CCR&RCW at [ccrcw@tznet.com](mailto:ccrcw@tznet.com) or 800.628.8534

Additional CPR classes are held through American Red Cross.

For more information, contact the appropriate agency:

Marshfield: 715.387.0235 ~ WI Rapids: 715.423.7360 ~

Stevens Point: 715.344.4052

## Circles of Life 2010

*Wisconsin's Annual Conference for Families of Children with Disabilities and the Professionals Who Support Them*

April 29-30,

Holiday Inn and Convention Center, Stevens Point

For more information call 608.266.8276 or visit

[www.colwisconsin.org](http://www.colwisconsin.org)

*23rd Annual*

## Together for Children

*The Greg and Mary Ann Renz Conference on Child Abuse & Neglect*

April 19th & 20th

Wilderness Glacier Canyon Lodge & Conference Center, Wisconsin Dells

To register or for more information visit [www.preventchildabusewi.org](http://www.preventchildabusewi.org)

*Portage County Child Care Association*

## Looking for Child Care Trainings? Look no Farther!

**A dollar a hour for training. You can't beat that!**

Sign up as a new member (\$12), receive 12 hrs of continuing education!

For more information about PCCCA contact Tari Wallner at 715.341.7750

## Provider Support / Advocate Groups

### Adams County

Adams County Early Childhood Education Council- Kelly Allen at 608.339.2868

### Clark County & Marquette County

Contact CCR&R if interested in developing an advocate group at 800.628.8534

### Portage County

Portage County Child Care Association — Joan Garski at 715.341.5873

Portage County Leaders- RoxAnne Forrest at 715.342.2999

### Waushara County

Contact Krista Sobieski at 920.566.0545

### Wood County

Marshfield Area Child Care Association— Krisann Mauritz at 715.387.2218

Wisconsin Rapids Child Care Advocates Council— Kitty Gross at 715.421.1092

## Managing Behaviors Through Self-Control

*How do you respond to a stressful situation presented by a difficult child or child who is just having a bad day? Learn more about yourself, how you respond to tough behaviors, and how you can better control the situation.*

May 11th, 2010: 6:30—8:30 PM

Streitel Conference Center, St. Joseph's Hospital, Marshfield

**OR**

May 18th, 2010: 6:30—8:30 PM

McMillan Memorial Library, Wisconsin Rapids

**Pre-registration is required.**

To register contact CCR&R of Central Wisconsin Inc., at [ccrcw@tznet.com](mailto:ccrcw@tznet.com) or 800.628.8534

# PROVIDER TRAINING

## Heartsaver CPR Training w/ AED

**Monday, April 26th, 6:00pm-9:30pm**

Location: YWCA, 613 5th St. Wausau

**Monday, May 17th, 6:00-9:30pm**

Location: YWCA, 613 5th St. Wausau

**Monday, June 14th, 6:00-9:30pm**

Location: CCC, 407 W Main St. Merrill

**Cost: \$45 per person** (includes workbook & CPR card)

Each *program* is required to purchase *one* Heartsaver CPR/AED workbook. You will be asked to complete the Review Questions, found in the book, prior to class.

*Group Centers that have 8 staff needing training, contact CCC—the instructor may be able to come to your center. (Mileage rates may apply)*

**Register—(deadline is one week before each class) call CCC at 715.539.9779.**

**2010 Wisconsin Infant & Early Childhood Mental Health Conference**

June 14th-16th

Grand Geneva Resort & Spa, Lake Geneva, WI

For more information call 608.442.0360 or visit <http://www.wiaimh.org>



### Northcentral Technical College Early Childhood Continuing Education Opportunities

Shaken Baby Syndrome	Apr 10	12:00-1:30 PM	\$10
SIDS, Child Abuse & Neglect Prevention	Apr 6	6:30-9:30 PM	\$19
Get ready for Week of the Young Child (Wausau Campus Only)	Apr 9	6:30-8:30 PM	\$19
Autism Defined (Antigo Campus Only)	Apr 13	6:30-8:30 PM	\$15
Cooking with School-Agers (Wausau Campus Only)	Apr 17	9:00-11:00 AM	\$19
Commonly Pursued Methods of Treatment for Autism (Antigo Campus Only)	Apr 20	6:30-8:30 PM	\$15
Supporting Play in the Classroom	Apr 24	9:00-11:00 AM	\$15
I Think my Child has Autism: Now What? (Antigo Campus Only)	Apr 27	6:30-8:30 PM	\$15
Kids and Nutrition	Apr 29	6:30-8:30 PM	\$15
ECE Book Club: Me, You, Us: Social Emotional Learning In Preschool	May 1	9:00-11:00 AM	\$15
The Impact of Domestic Abuse	May 4	6:30-8:30 PM	\$15
Kids CAN Cook! (Wausau Campus Only)	May 7	6:30-8:30 PM	\$19
Shaken Baby Syndrome	May 11	6:30-8:00 PM	\$10

**Visit NTC's website for information about Spring 2010 ECE Courses!**

(Most classes available ITV, call NTC for more information)  
(ITV Campuses: Antigo, Medford, Phillips, Spencer, & Wittenberg)

**REGISTER** online at [www.ntc.edu/wls/register](http://www.ntc.edu/wls/register) or by phoning the Wausau campus at 715.675.3331 x 5861, or your local campus.

2010 Early Childhood Education Conference

April 23rd & 24th

University of WI—Stout

If you have any questions, call

715.232.2793 or visit

[www.uwstout.edu/outreach/ece](http://www.uwstout.edu/outreach/ece)



Wisconsin Family Child Care Association

**29th Annual Conference**

May 6-8, 2010

Kalahari Resort in Wisconsin Dells

For more information visit

[www.wisconsinfamilychildcare.org](http://www.wisconsinfamilychildcare.org) or contact

Teri Dietzler at 715.447.8138

*Join us for..*

**Child Care Provider Spring Reception**

Thursday April 15

6:00-8:00 PM (*check-in begins at 5:30*)

At the Rose Garden, Wausau

Watch your mail for more information!

*Sponsored by NCAEYC & CCC*

**Sizzling Summer Activities**

June 16th, 2010 7:00-8:00 PM (*1 hour of Cont. Ed!*)

**Marathon County Public Library, Wausau**

Cost: \$10.00—payable to and mailed to CCC by **June 7th**

**You need to register to receive materials and a certificate!**

**REGISTER! Call 715.539.9779 and send \$10 to:**

CCC 407 W Main Street, Merrill, WI 54452

*This workshop is hosted by Krystal Pijan, Pammy Haefner, and*

*Peggy Bliese—professional child care providers.*

### Provider Support / Advocate Groups

**Langlade County:** Meeting times to be determined. For more information contact, Donna Murra at 715.350.4159

**Lincoln County:** Meeting times to be determined. For more information contact, Brenda Danielczak at 715.551.4775

**Marathon County:** Meeting every-other month; location and topics vary. Call Ann Sheahan at 715.302.2240 for details.

**Taylor County:** 3rd Monday of month - For more information, call Kelly Emmerich at 715.748.6192.

# ACTIVITY CENTER

## April is...

Month of the Young Child  
Autism Awareness Month  
National Garden Month  
Straw Hat Month

## I'M A LITTLE WATERING CAN

Tune: "I'm A Little Teapot"

I'm a little watering can  
Tall and thin.  
To fill me up,  
Just pour the water in.  
Then you tip me over  
And the water sprinkles out.  
"Thanks for the drink,"  
The flowers all shout!

## May is...

National Egg Month  
National Photo Month  
National Smile Month  
National Family Month

## WATERMELON POPSICLES

1 cup seedless watermelon chunks  
1 cup unsweetened orange juice  
1 cup water.

Blend all ingredients together in a blender. Pour into small paper cups. Place in freezer and, when partially frozen, insert popsicle sticks or small plastic spoons for handles. When completely frozen, unmold by pouring hot water over bottoms of cups.

## June is...

Great Outdoors Month  
Dairy Month  
National Ice Tea Month  
Skyscraper Month

## Shiny Egg

Need: White Tag board, condensed milk, food coloring, paint brush



Directions: Cut out an egg shape from white tag board. In a separate container mix condensed milk with different colors of food coloring. Use a separate paint brush for each color and paint the egg. Let the egg dry for at least 48 hours.

## Bunny Hop

Line up the children at a starting line. Signal the start by a whistle, have the children, bunny hop to the finish line. Give each child a certificate for being the most "hoppiest" bunny

## Mom's Apple Pie

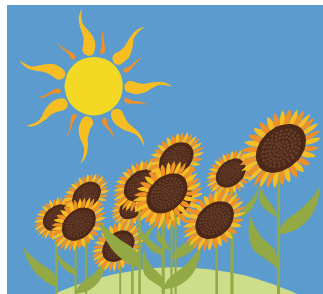
Need: Potpourri, Small Pie Tin, Pom poms, Gold Glitter, Tan Felt, Glue, Scissors, Pencil

Directions: Place your pie tin upside down on the tan felt. Trace the shape with your pencil and cut out the "pie crust". Mix the potpourri and the pom pom "apples" in the pie tin. Glue around the edge of the pie tin and cover the pie with the felt crust. When your pie is dry, decorate the top by drawing lines with glue and sprinkle with glitter.

## Bubble Pool

Need: Small Backyard Kids Pool, Water, Mr Bubble (Bubble Soap), Bubble Toys

Directions: Add bubble soap to empty kids pool. Fill with water. Add various bubble toys like empty bottles, straws, hoops, string, etc. Creates a BUBBLE wonderland, right in the back yard.



## LEATHER VASES

Need: Jar or vase, paint brush, masking tape, brown liquid shoe polish

Give each child a jar and a roll of masking tape. Have the child tear off small pieces of tape and stick them on the jar. Once the jar is completely covered, the children can paint the tape with brown liquid shoe polish. Let dry, fill with flowers.



Child Care Resource & Referral of Central Wisconsin:  
**Board of Directors**

Pat Markuson, *President* ■ Jane Marquardt, *Vice-President* ■ Greg Bogenpohl, *Treasurer* ■  
Shawn Balz ■ Kim Gachnang ■ Kelly Allen ■ Lenna Hamilton ■ Steve Walczak ■ Marianne Schock ■ Vicki Lobermeier

**MISSION:** *To be the key resource of comprehensive services to enhance quality child care in Central Wisconsin.*



**Looking forward . . .**  
We're excited to offer  
**Social Emotional Foundations  
of Early Learning (SEFEL)  
training—Infant/Toddler and  
Preschool—as well as WI Model Early Learning  
Standards (WMELS) training in late summer  
or early fall. Details will be shared soon!**

**CCR&R Office Services**

*Available for child care providers.*

Laminator: 75 cents per foot

Copier: 10 cents per white copy

**Both are self-serve!** CALL AHEAD:  
(Merrill) 539.9779, (WI Rapids) 423.4114  
OR 1.800.628.8534

Child Care Connection:  
**Board of Directors**

Ginny Rusch, *President* ■ Kelly Jensen, *Vice-President* ■ Rich Thwaites, *Treasurer* ■ Mary Olson, *Secretary*  
Kim Van Hoof ■ Donna Murra ■ Joann Benedict ■ Carole Panzer ■ Georgia Fischer ■ Sandy Suprak ■ Connie Zebro ■ Katie Antoniewicz

**MISSION:** *To respond to needs and deliver services that improve and support a quality child care system.*

Xav tau kev pab pes/xhais daim ntauw xovxwm  
no thov hu tuaj rau Kao Lai Xiong 715-539-9779  
Hhub Mondays - 9:30 txog 3:30pm.



Child Care Resource & Referral  
of Central Wisconsin, Inc.  
210 East Jackson Street  
Wisconsin Rapids, WI 54494

Non-Profit Org  
US Postage  
PAID  
Permit No 150  
Wausau WI

“THE RESOURCE CONNECTION”